



Middle Valley Maple

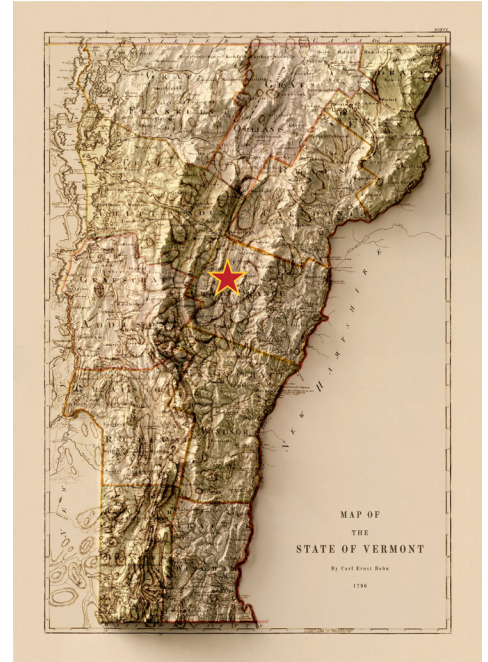
Better fittings, better price!

Williamstown, VT

About Us:

Middle Valley Maple is a subsidiary of Progressive Plastics, Inc. (PPI) located in the green mountains of Williamstown, Vermont. Our parent company was founded in 1989, and has since prominently expanded; increasing its tool making, product design, and proprietary manufacturing capability.

In 2009, we partnered with the University of Vermont's Proctor Maple Research Center to design, prototype, test and manufacture new patented Maple sap fittings. Since then, we have manufactured over 75,000,000 other various high-quality fittings for the maple syrup industry.



With over 34 years of plastic injection molding experience, and passion for the Maple industry, our new subsidiary was born. Together again with University of Vermont's Proctor Maple Research Center, Middle Valley Maple has developed a new line of innovative fittings for the industry. This line will be manufactured and sold from central Vermont. This direct manufacturing and sales will allow for our new line of various fittings to be sold at a lower cost than industry standard.

We're designing, testing & expanding our line constantly!
Check-in with our progress at MiddleValleyMaple.com

Ordering Instructions:

To place an order please call 1 (802) 433-1563
Or email us at Contact@MiddleValleyMaple.com

*** All Fittings are manufactured using FDA approved materials.
Pending Patents: Submitted in the US/Canada**



Middle Valley Maple

109 Industry St. Williamstown, VT 05679
Visit us online at: www.MiddleValleyMaple.com
Email us at: Contact@MiddleValleyMaple.com
Phone: 1 (802) 433-1563

5/16" Tube Fittings



5/16" ARC Barb-Spout

The barrel is shorter to tap into the most productive sap region of the trees. The barbs increase spout holding capacity.

- # 170-001 Clear PC
 - # 170-011 Black Nylon
 - # 170-014 White Nylon
- \$18.00 / 100ct



5/16" ARC Smooth-Spout

The ARC provides less friction caused by turbulent flow and reduces head pressure loss in vacuum systems.

- # 170-002 Clear PC
 - # 170-012 Black Nylon
 - # 170-015 White Nylon
- \$17.00 / 100ct

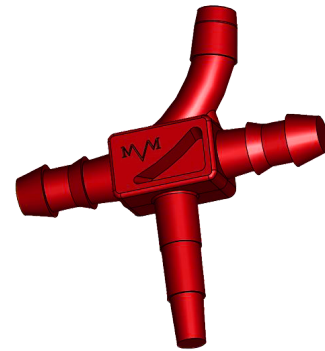
* Tinted colors available in **Red**, **Blue**, **Yellow**



5/16" ARC-Tee

No parting lines on the first barbs.
Versatile 3-step plug design.

- # 170-003 Black Nylon
- \$26.00 / 100ct



5/16" ARC Dead-End Tee

No need for a left and right; this fitting functions on either side of the tree! Tee's can function in normal orientation or inverted for tapping below the lateral.

- # 170-013 Red Nylon
- \$26.00 / 100ct



Middle Valley Maple

109 Industry St. Williamstown, VT 05679
Visit us online at: www.MiddleValleyMaple.com
Email us at: Contact@MiddleValleyMaple.com
Phone: 1 (802) 433-1563

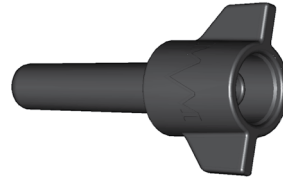
5/16" Tube Fittings



**5/16" Barb
Spout Adapter**

Tap into the most productive sap region of the trees. The barbs increase the spouts holding capacity.

170-004 Clear PC
170-005 Black Nylon
170-017 White Nylon
\$18.00 / 100ct



**5/16" Standard
Spout Adapter**

Both the standard and barb adapter spouts have a raised surface area to prevent damage to inner sealing surface when tapping into tree.

170-006 Clear PC
170-007 Black Nylon
170-018 White Nylon
\$16.00 / 100ct



**5/16" ARC
Stubby Spout**

The ARC provides less friction caused by turbulent flow and reduces head pressure loss in vacuum systems.

170-008 Black Nylon
170-016 White Nylon
\$26.00 / 100ct



**5/16" Hooked
Straight Connector**

Designed with a wider body for easy use with tubing tools. The connector has beveled fitting entrances for reduced friction and turbulence. No parting lines on first barbs.

170-009 Black Nylon
\$19.00 / 100ct

5/16" End Ring

Designed with a wider body ring width for better retention. Side posts provide ease of grip with tubing tools.

170-010 Black Nylon
\$19.00 / 100ct





Middle Valley Maple

109 Industry St. Williamstown, VT 05679
Visit us online at: www.MiddleValleyMaple.com
Email us at: Contact@MiddleValleyMaple.com
Phone: 1 (802) 433-1563

5/16" Tube Fittings

5/16" Four Star Tee

These star style mainline entrance fittings allow syrup producers to bring multiple 5/16" lateral tubing lines into a single port in the plastic mainline tubing or black plastic water pipe. The star fitting has a 1/2" male thread on the bottom to be threaded into either the combination reducing tees, or a combination reducing elbow.



170-020 Black Nylon
\$7.50 / 10ct

5/16" End of Line Hook



This new design end hook provides the ability to tighten the line and also take the line down when needed.

170-025 Black Nylon
\$22.00 / 100ct



5/16" with 1/4" Barrel
ARC Barb-Spout

Smaller tap hole (1/4") creates less wounding in the tree and reduces the compartmentalization effect for healthier maples.

170-021 Clear PC
\$18.00 / 100ct



5/16" with 1/4" Barrel
ARC Smooth-Spout

The ARC provides less friction caused by turbulent flow and reduces head pressure loss in vacuum systems.

170-022 Clear PC
\$18.00 / 100ct



Middle Valley Maple

109 Industry St. Williamstown, VT 05679
 Visit us online at: www.MiddleValleyMaple.com
 Email us at: Contact@MiddleValleyMaple.com
 Phone: 1 (802) 433-1563

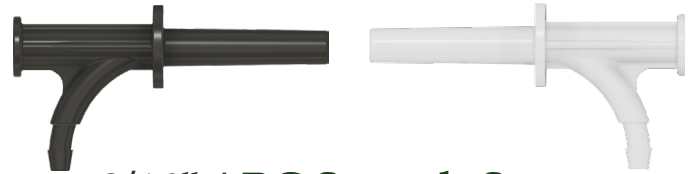
3/16" Tube Fittings



3/16" ARC Barb-Spout

The barrel is shorter to tap into the most productive sap region of the trees. The barbs increase spout holding capacity.

- # 170-036 Clear PC
- # 170-039 Black Nylon
- # 170-040 White Nylon
- \$21.00 / 100ct



3/16" ARC Smooth-Spout

The ARC provides less friction caused by turbulent flow and reduces the risk of clogging.

- # 170-050 Clear PC
- # 170-051 Black Nylon
- # 170-052 White Nylon
- \$20.00 / 100ct

* Tinted colors available in **Red**, **Blue**, **Yellow**



3/16" ARC-Tee

No parting lines on the first barbs. Versatile 3-step plug design. Arc dropline connection reduces the risk of clogging.

- # 170-041 Black Nylon: 3/16th Dropline
- # 170-043 Black Nylon: 5/16th Dropline
- \$30.00 / 100ct



3/16" ARC Dead-End Tee

No need for a left and right; this fitting functions on either side of the tree! Tee's can function in normal orientation or inverted for tapping below the lateral.

- # 170-044 Red Nylon: 3/16th Dropline
- # 170-053 Red Nylon: 5/16th Dropline
- \$30.00 / 100ct



Middle Valley Maple

109 Industry St. Williamstown, VT 05679
Visit us online at: www.MiddleValleyMaple.com
Email us at: Contact@MiddleValleyMaple.com
Phone: 1 (802) 433-1563

3/16" Tube Fittings



3/16" ARC Stubby Spout

The ARC provides less friction caused by turbulent flow and reduces the risk of clogging.

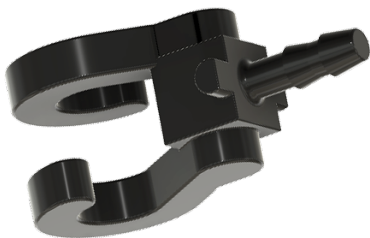
170-046 Black Nylon
170-047 White Nylon
\$32.00 / 100ct



3/16" Hooked Straight Connector

Designed with a wider body for easy use with tubing tools. The connector has beveled fitting entrances for reduced friction and turbulence. No parting lines on first barbs.

170-034 Black Nylon 3/16" to 3/16"
170-035 Black Nylon 5/16" to 3/16"
\$19.00 / 100ct



3/16" End of Line Hook

This new design end hook provides the ability to tighten the line and also take the line down when needed.

170-029 Black Nylon
\$22.00 / 100ct



Middle Valley Maple

109 Industry St. Williamstown, VT 05679
Visit us online at: www.MiddleValleyMaple.com
Email us at: Contact@MiddleValleyMaple.com
Phone: 1 (802) 433-1563

Antimicrobial Fittings & Droplines

Middle Valley Maple antimicrobial fittings safeguard against microbes and combat bacteria/fungal microbial growth that develops during the sugaring process over time. This allows for improved sap yield performance, especially when tapping early or when fittings are reused for additional seasons.

Middle Valley Maple antimicrobial fittings are manufactured with a silver based antimicrobial additive that is the first in the industry to be approved by the State of Vermont for organic certification.

Vermont Organic Farmers, LLC (VOF) reviewed the materials used for the manufacturing by Middle Valley Maple and found them to be in compliance with the USDA National Organic Program. The antimicrobial contains no chemical fungicides or antibacterial ingredients prohibited in the NOP.



**5/16" Antimicrobial
ARC Barb-Spout**

The Arc Barb Spout provides increased sap yields by tapping into the outer-most rings of xylem which is the most highly conductive of sap and the highest concentration of stored sugar.

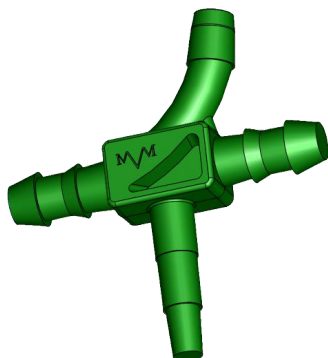
170-019 Transparent Green PC
170-030 Green Nylon
\$24.00 / 100ct



**5/16" Antimicrobial
ARC Smooth-Spout**

The Arc provides less friction, smooth flow, and less vacuum head pressure losses. Standard 5/16th smooth barrel.

170-026 Transparent Green PC
\$22.00 / 100ct



5/16" Antimicrobial ARC-Tee

Arc dropline feature provides smooth flow, better natural vacuum, and less chance for clogging. No Parting lines on the lateral first barbs. The antimicrobial reduces microbial growth during repeated seasons. Versatile 3-step plug design.

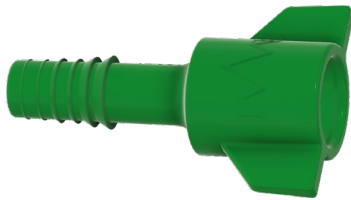
170-032 Green Nylon
\$32.00 / 100ct



Middle Valley Maple

109 Industry St. Williamstown, VT 05679
Visit us online at: www.MiddleValleyMaple.com
Email us at: Contact@MiddleValleyMaple.com
Phone: 1 (802) 433-1563

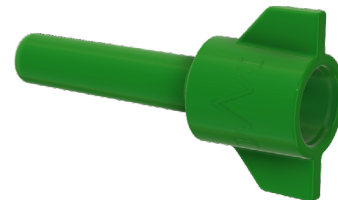
Antimicrobial Fittings & Droplines



**Antimicrobial
Barb Spout Adapter**

Tap into the most productive sap region of the trees with barbs that increase the spouts holding capacity. Recessed Stubby seal area prevents damage when tapping into trees that can cause vacuum leaks.

170-048 Transparent Green PC
170-024 Green Nylon
\$24.00 / 100ct



**Antimicrobial
Standard Spout Adapter**

Both the standard and barb adapter spouts have a raised surface area to prevent damage to inner sealing surface when tapping into tree.

170-056 Transparent Green PC
170-057 Green Nylon
\$22.00 / 100ct



5/16" Antimicrobial ARC Stubby Spout

The ARC provides less friction caused by turbulent flow and reduces head pressure loss in vacuum systems. The antimicrobial reduces microbial growth during repeated seasons.

170-027 Green Nylon
\$30.00 / 100ct



Middle Valley Maple

109 Industry St. Williamstown, VT 05679
Visit us online at: www.MiddleValleyMaple.com
Email us at: Contact@MiddleValleyMaple.com
Phone: 1 (802) 433-1563

Antimicrobial Fittings & Droplines



**3/16" Antimicrobial
ARC Barb-Spout**

The Arc Barb Spout provides less friction, smooth flow, and reduces the risk of clogging.

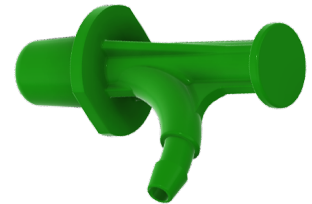
170-037 Transparent Green PC
170-038 Green Nylon
\$26.00 / 100ct



**3/16" Antimicrobial
ARC Smooth-Spout**

The Arc improves the natural vacuum and helps prevent slime blocks.

170-054 Transparent Green PC
170-055 Green Nylon
\$25.00 / 100ct



**3/16" Antimicrobial
ARC Stubby Spout**

The Arc Barb Spout provides less friction, smooth flow, and reduces the risk of clogging.

170-045 Green Nylon
\$35.00 / 100ct



3/16" Antimicrobial ARC-Tee

The Arc dropline feature provides smooth flow, better natural vacuum, and less chance for clogging. No Parting lines on the lateral first barbs. The antimicrobial reduces microbial growth during repeated seasons. Versatile 3-step plug design.

170-042 Green Nylon with 3/16" Dropline Connection
170-060 Green Nylon with 5/16" Dropline Connection
\$35.00 / 100ct



Middle Valley Maple

109 Industry St. Williamstown, VT 05679
Visit us online at: www.MiddleValleyMaple.com
Email us at: Contact@MiddleValleyMaple.com
Phone: 1 (802) 433-1563

New for 2025 Season! 36" Pre-Cut Antimicrobial Droplines

170-031 Transparent Green
\$75.00 / 100ct



Middle Valley Maple antimicrobial droplines safeguard against microbes and combat bacteria/fungal microbial growth that develops during the sugaring process over time.

Middle Valley Maple's antimicrobial droplines are BPA free, UV protected and manufactured with an FDA approved material. The silver based antimicrobial additive is the first in the industry to be approved by the State of Vermont for organic certification.

(VOF Material review and approval document available upon request)

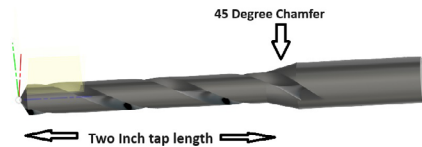
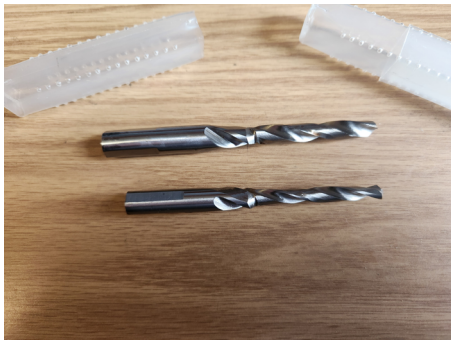
For more information regarding the effects of microbial growth on the maple sugaring process visit:
<https://www.youtube.com/watch?v=NnanxblnBJ4>



Middle Valley Maple

109 Industry St. Williamstown, VT 05679
Visit us online at: www.MiddleValleyMaple.com
Email us at: Contact@MiddleValleyMaple.com
Phone: 1 (802) 433-1563

Accessories: New for 2025 Season!



High Speed Steel
(3 - Flat shank prevents slipping)

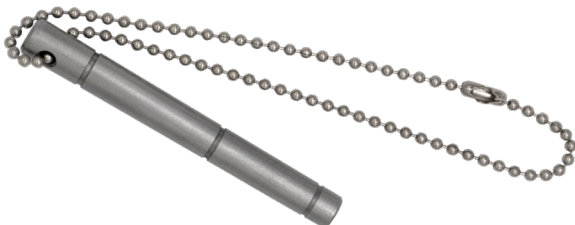
Chamfered Maple Tree Tapping Bit

This innovative chamfered drill bit provides a 45-degree lead-in that assists in guiding spouts into the drilled hole when tapping. The amount of chamfer can be controlled by the amount of pressure applied after the 2" hole is drilled. The chamfered bit can also be used on thick bark trees to avoid chipping bark away prior to drilling to assure a good seat with the spout. Available in both 5/16" and 1/4" sizes.

170-062 5/16" Tapping Bit
170-063 1/4" Tapping Bit
\$18.00 / Each

Dropline and Lateral Tubing Gauge

Tubing inner diameter size is critical for assuring a good seal on fittings and/or to prevent end splitting if too small. This 5/16" gauge was designed and is used by the proctor Maple Research Center to verify tubing size prior to installing in the sugar bush.



#170-064 5/16" Tubing Diameter Gauge
\$12.00 / Each



Middle Valley Maple

109 Industry St. Williamstown, VT 05679
Visit us online at: www.MiddleValleyMaple.com
Email us at: Contact@MiddleValleyMaple.com
Phone: 1 (802) 433-1563

Coming Soon!



5/16" ARC Tubing Mainline Saddle

The ARC provides less friction caused by turbulent flow, decreases the risk of clogging, and reduces pressure head loss in vacuum systems. Saddle requires a 5/16" hole diameter and has a stationary ARC connection barb. Non-swivel top eliminates potential for a vacuum leak. Can orient to the left or right of the mainline. Mounting hardware and sealing washer included.

170-033 5/16" Saddle for 1" Mainline: Black Nylon
#170-061 5/16" Saddle for 3/4" Mainline: Black Nylon



3/16" External Connection Spouts

Tubing press fits and seals into tapered spout entrance and barbed latch locks over to secure in place. This will allow the complete inner diameter of the tubing to be open with no reduction caused internal spout barbs. Greatly increases the flow and significantly reduces the risk of "slime" build up and blockage.

#170-065 Barb Spout: Nylon
#170-066 Smooth Spout: Nylon



3/16" External Connection Tee

Fully open inner diameter of the dropline tubing greatly increases sap flow to the lateral lines and reduces the risk of clogging at the junctions.

170-067 Plug Tee: Nylon



Middle Valley Maple

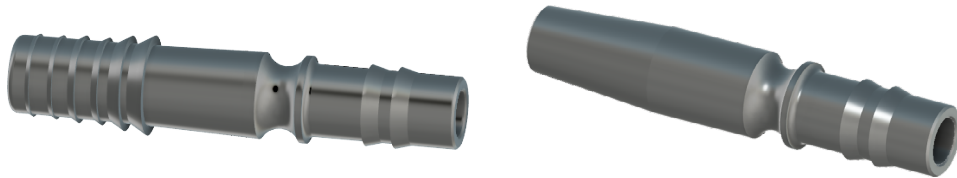
109 Industry St. Williamstown, VT 05679

Visit us online at: www.MiddleValleyMaple.com

Email us at: Contact@MiddleValleyMaple.com

Phone: 1 (802) 433-1563

Coming Soon!



5/16" Stainless Steel Food Grade Spouts

5/16" tap hole compatible with 5/16" tubing. These products can be sterilized year after year. Economical solution for bags, buckets or tubing. Our designed notch secures hooks if needed.

#170-XXX Barb Barrel

#170-XXX Smooth Barrel